

SH 5708W A LOUDSPEAKER

CONTENT

1. Specifications
2. Drawing
3. Test Method
4. Reliability Test
5. Surface Mounting Condition
6. Packing
7. Notice
8. History Change Record

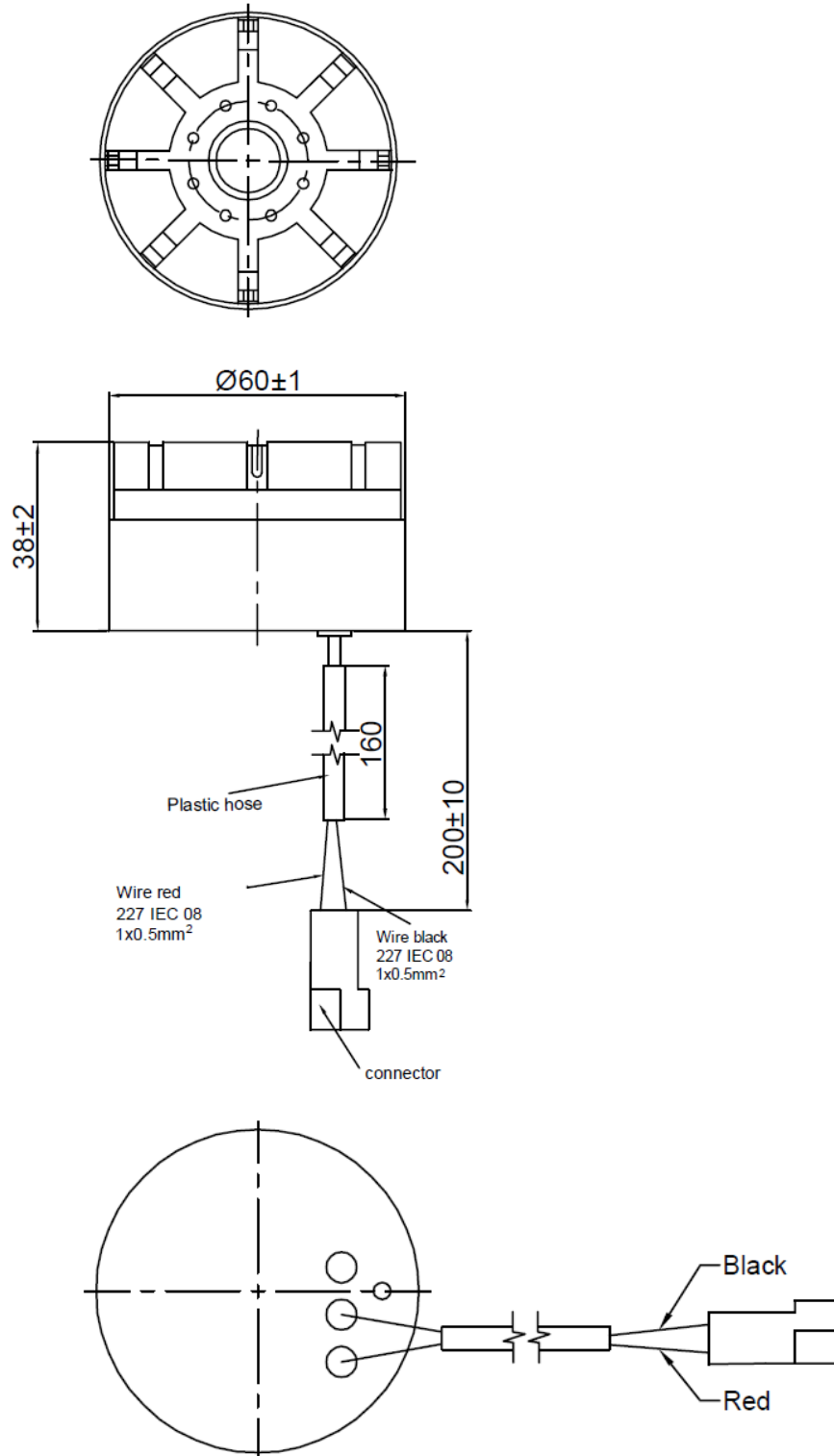


1. SPECIFICATIONS

Parameter	Unit	Conditions / Description	MIN	TYP	MAX
Impedance	Ω	At 1.000Hz	6,8	8	9,2
Input Power	W			1	3
SPL	dBa	At 1W, F0, in 1m distance	85		
Resonance Frequency	Hz		600	750	900
Operating frequency range	Hz		500		3.000
THD	%	At 1.000Hz, 0.5W			10
Buzz & Rattle		Must be normal at sine wave 2.83V			
Polarity		Positive voltage to (+), the diaphragm moves forward			
Contact				WIRE	
Packaging				BOX	
Operating Temperature	$^{\circ}\text{C}$		-20		+60
Storage Temperature	$^{\circ}\text{C}$		-20		+60
Weight	g			68	

DESIGNED BY	Ralf Hinnerichs	DATE	2007.09.04	PART NO.	SH 5708W A	INDEX	A
RELEASED BY	Ralf Hinnerichs	DATE	2007.09.04				
CHANGED BY	Rabea Richter	DATE	2019.08.02				
DRAWING NO.	393289026						

2. DRAWING

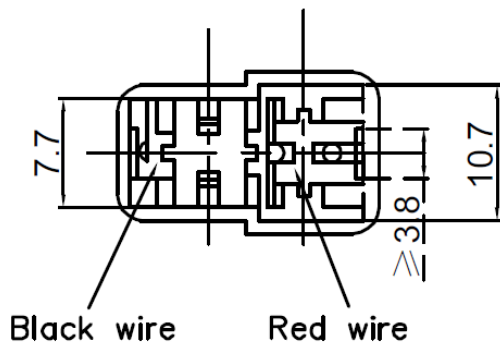
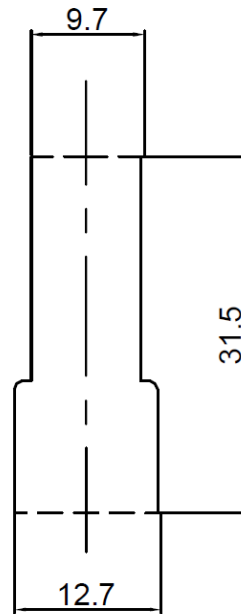
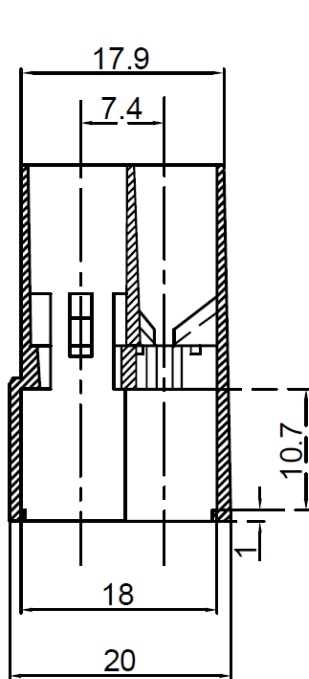


Tolerance ± 0.2 Unit:mm

DESIGNED BY	Ralf Hinnerichs	DATE	2007.09.04	PART NO.	SH 5708W A	INDEX	A
RELEASED BY	Ralf Hinnerichs	DATE	2007.09.04				
CHANGED BY	Rabea Richter	DATE	2019.08.02				
DRAWING NO.	393289026						

CONNECTOR

Housing



Hose



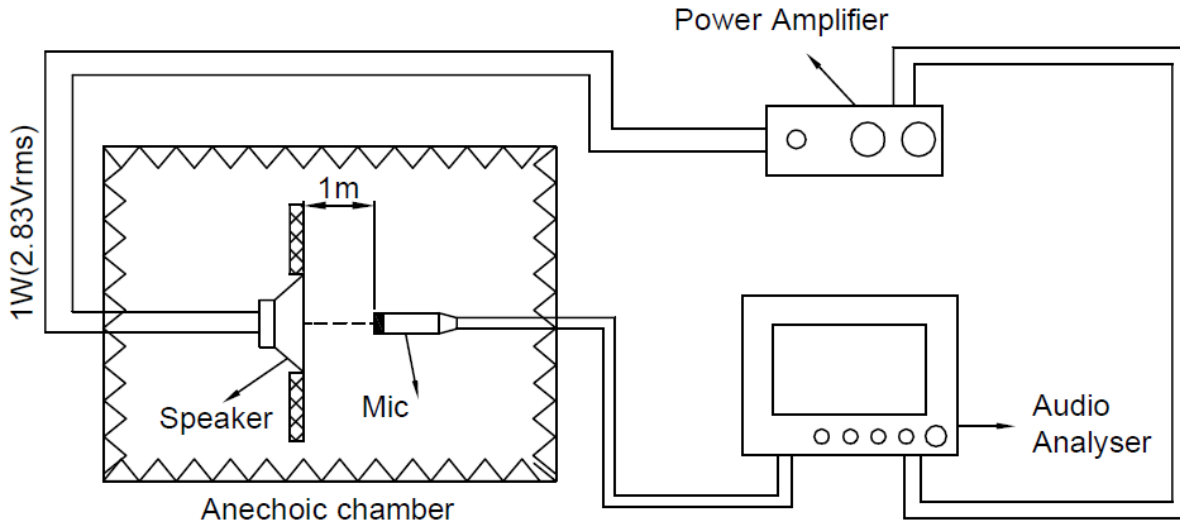
Thickness: 0.45-0.55mm
Inner diameter: $\varnothing 5.9 \pm 0.3$

Printing:
D.C LR83355 CSA TYPE 105°C
PVC 300V

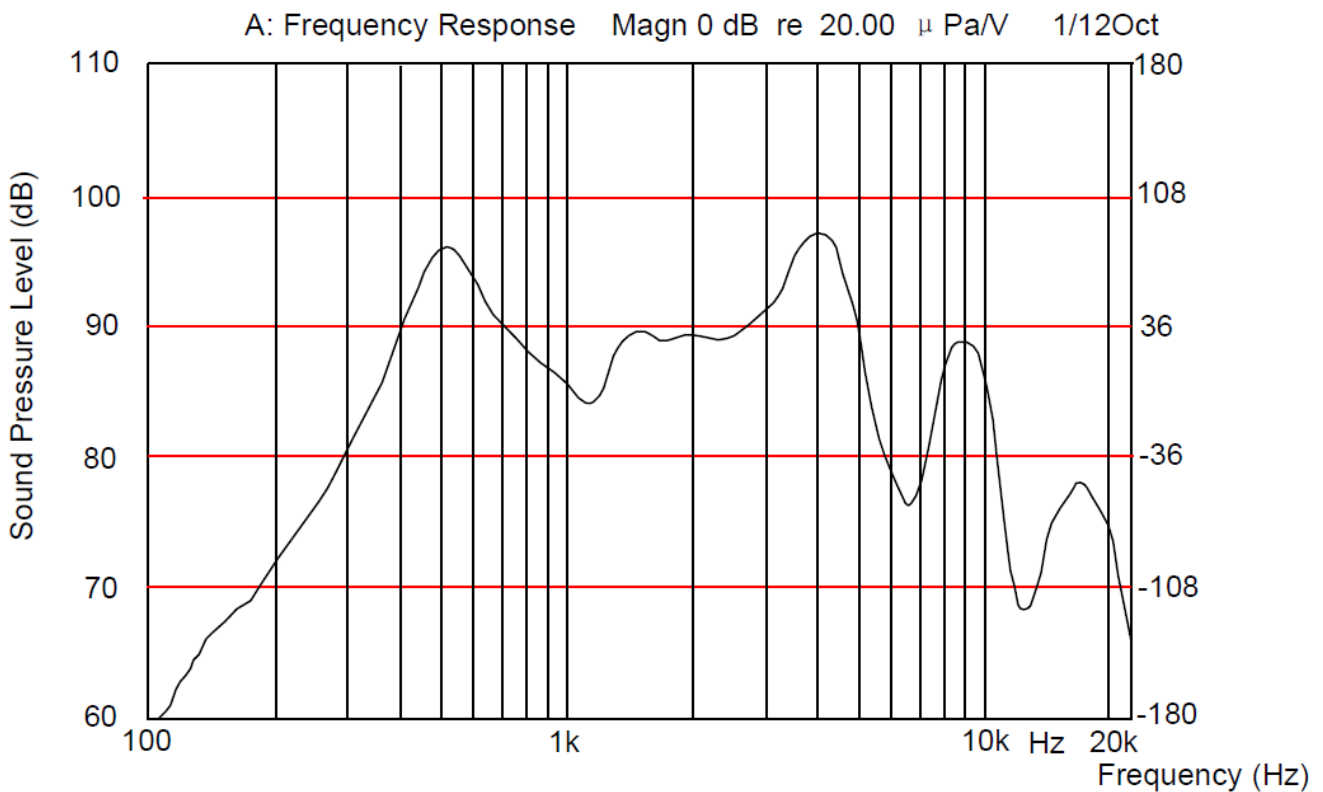
DESIGNED BY	Ralf Hinnerichs	DATE	2007.09.04	PART NO.	SH 5708W A	INDEX	A
RELEASED BY	Ralf Hinnerichs	DATE	2007.09.04				
CHANGED BY	Rabea Richter	DATE	2019.08.02				
DRAWING NO.	393289026						

3. TEST METHOD

3.1 TEST SETUP

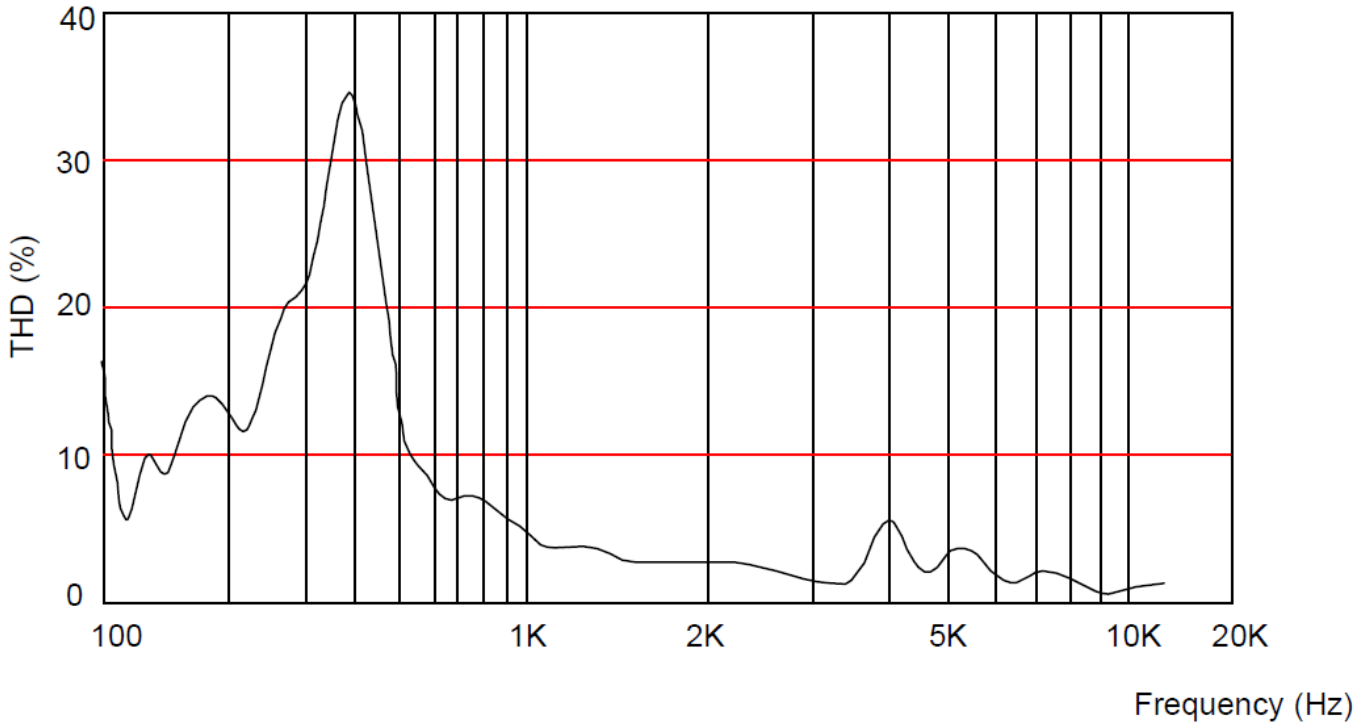


3.2 FREQUENCY RESPONSE CURVE (only for reference)



DESIGNED BY	Ralf Hinnerichs	DATE	2007.09.04	PART NO.	SH 5708W A	INDEX	A
RELEASED BY	Ralf Hinnerichs	DATE	2007.09.04				
CHANGED BY	Rabea Richter	DATE	2019.08.02				
DRAWING NO.	393289026						

3.3 TOTAL HARMONIC DISTORTION (only for reference)



4. RELIABILITY TEST

4.1 Load Test

Input Power 0.25W, pink noise
Duration 24 hours

4.2 Heat Test

Temperature +60 ± 3°C
Duration 24 hours

4.3 Cold Test

Temperature -20 ± 3°C
Duration 24 hours

4.4 Temperature Change (Shock) Test

Low Temperature -10 ± 3°C
High Temperature +50 ± 3°C
Dwell time each temp. 30 Minutes
Transfer time low to high <10 Seconds
Cycles 100

4.5 Moisture Test

Temperature +40 ± 2°C
Humidity 92 ± 2% RH
Duration 24 hours

4.6 Drop Test

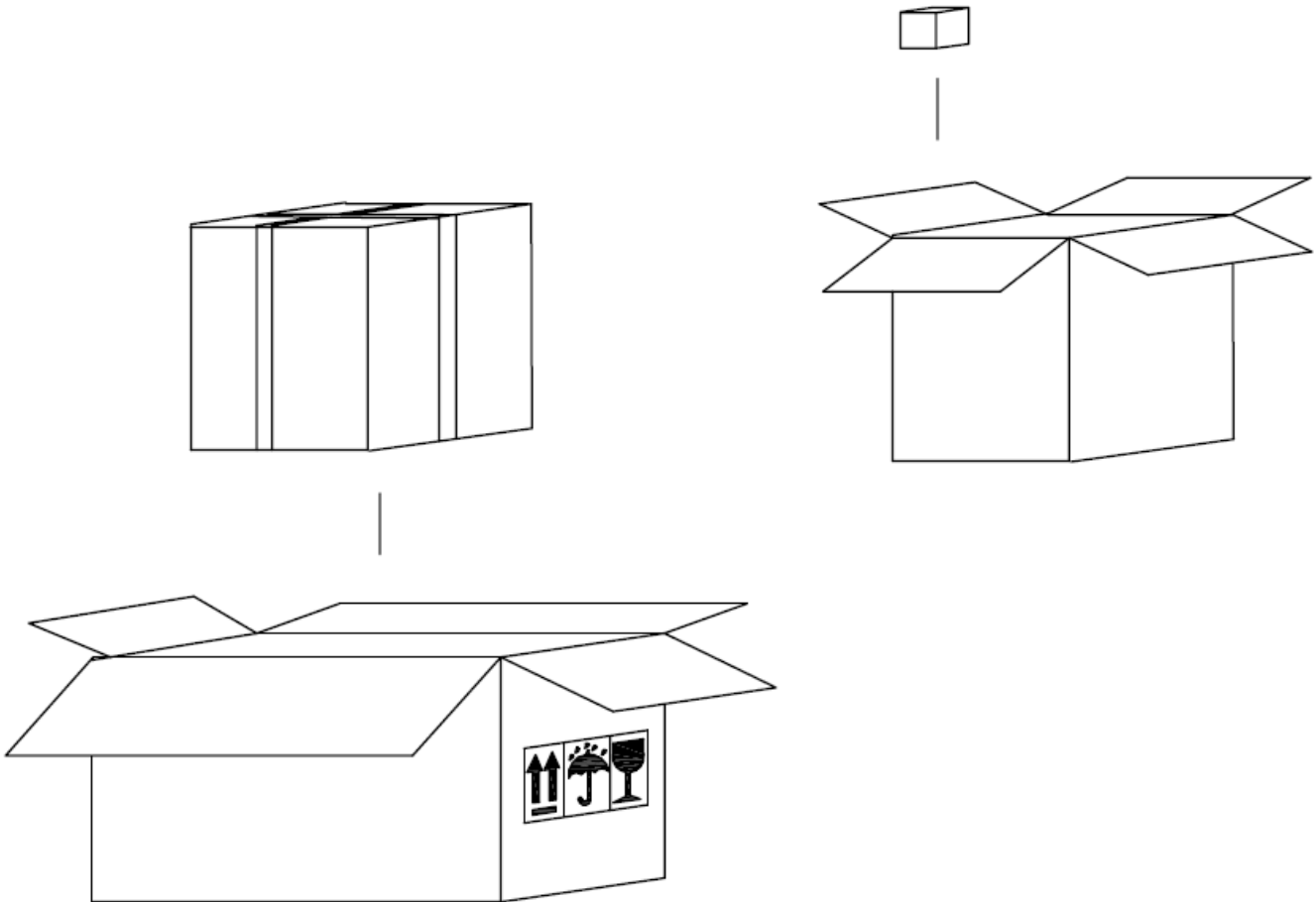
Height 80cm (to concrete or steel floor)
Direction x, y, z, 3 axes

Notice: After the test, all electronic and acoustic characteristic should be satisfied with the specification.

SPL: Deviation is of ± 2dB of initial value.

DESIGNED BY	Ralf Hinnerichs	DATE	2007.09.04	PART NO.	SH 5708W A	INDEX
RELEASED BY	Ralf Hinnerichs	DATE	2007.09.04			
CHANGED BY	Rabea Richter	DATE	2019.08.02			
DRAWING NO.	393289026					A

5. PACKING



5.1 PACKING QUANTITY

100 pcs per box
 2 boxes per carton
 200 pcs per carton in total
 Carton size 56x37x33,5cm

DESIGNED BY	Ralf Hinnerichs	DATE	2007.09.04	PART NO.	SH 5708W A	INDEX	A
RELEASED BY	Ralf Hinnerichs	DATE	2007.09.04				
CHANGED BY	Rabea Richter	DATE	2019.08.02				
DRAWING NO.	393289026						

6. HISTORY CHANGE RECORD

REV	CHANGE ITEMS		DATE
	BEFORE CHANGE	AFTER CHANGE	
1	Old Layout	New Layout	2019.08.02

DESIGNED BY	Ralf Hinnerichs	DATE	2007.09.04	PART NO.	SH 5708W A	INDEX	A
RELEASED BY	Ralf Hinnerichs	DATE	2007.09.04				
CHANGED BY	Rabea Richter	DATE	2019.08.02				
DRAWING NO.	393289026						