

Content

- 1. General
- 2. Electrical and acoustical specification
- 3. Drawing
- 4. Recommended reflow condition
- 5. Packageing

**1. General**

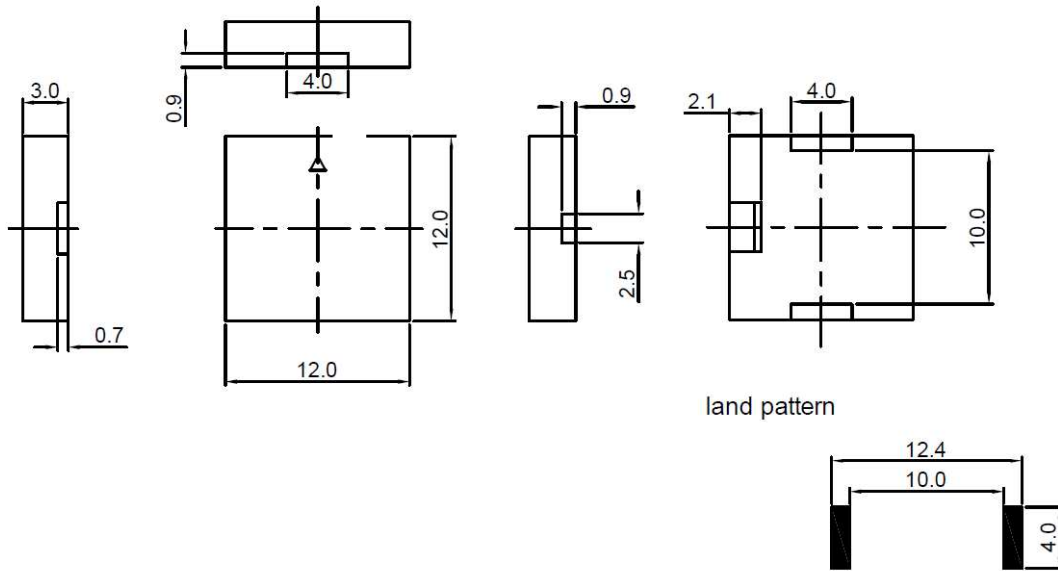
Operating temperature: -40°C to +85°C      component weight [g]: 0,35  
 Storage temperature: -40°C to +85°C  
 Contact: SMD      housing color:  
 Packageing: tor      IP rating:  
 ESD conform   
 RoHs conform: yes  
 Remark:  
 reflowable

**2. Electrical and acoustical specification**

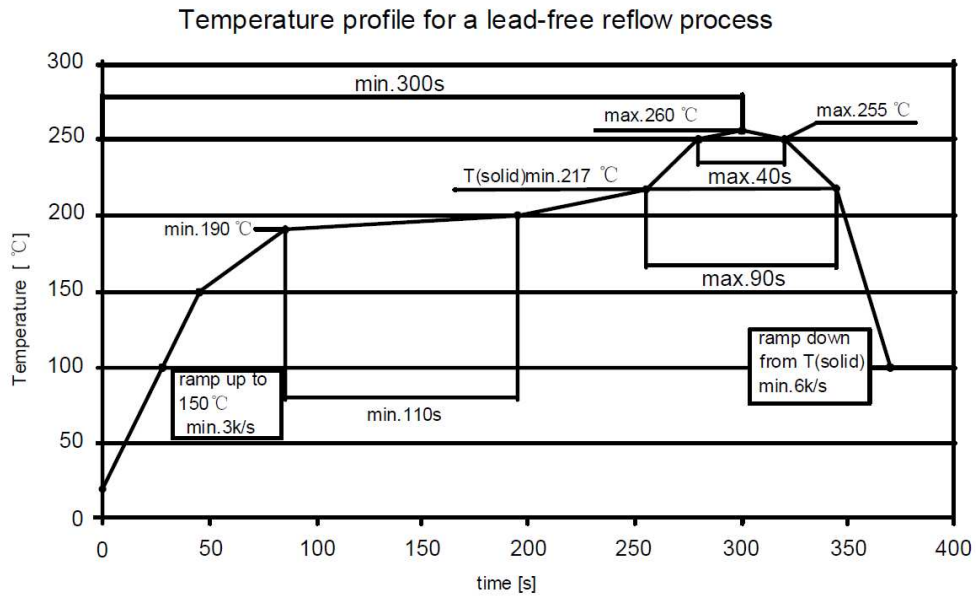
Description	Condition	Value
Rated voltage [Vpp]	Square wave	3
operating voltage [Vpp]		1 - 25
Current consumption [mA]	at rated voltage	max. 1
Capacity [pF]	at 120Hz	16 ± 30%
SPL [dBA]	at 2kHz in 10 cm distance	min. 70
Resonance frequency [Hz]		2000

<b>GREWUS</b>		dimensions without tolerance:	scale:	
Designed by: Ralf Hinnerichs	01.06.2012	part number: <b>BPE1203S-05A</b>	index:	Last update:
Released by: Ralf Hinnerichs	01.06.2012		<b>A</b>	01.06.2012
drawing number: <b>410614212</b>		<b>Buzzer</b>	Page 1 of 3	

3. Drawing



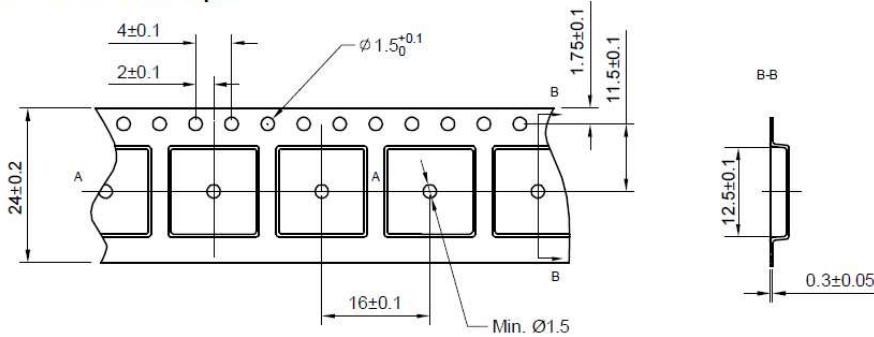
4. Recommended reflow condition



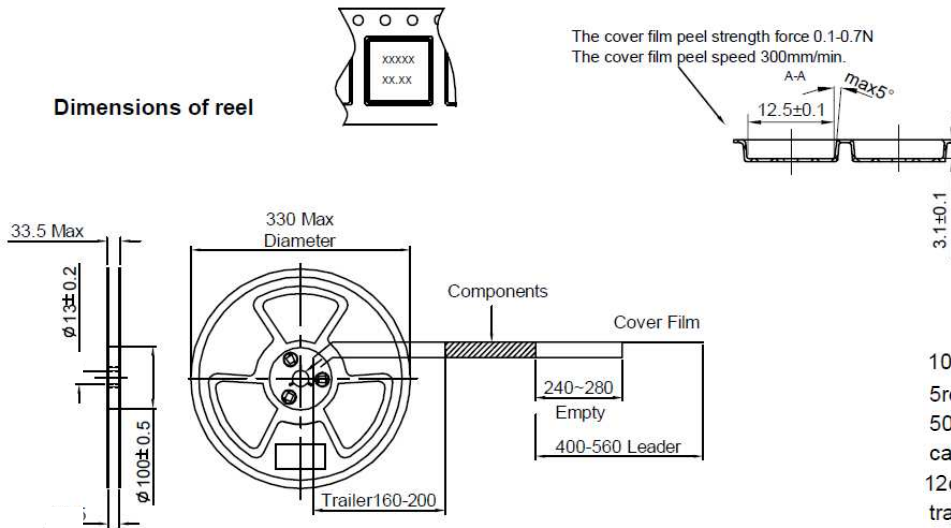
<b>GREWUS</b>			Dimensions without tolerance ± 0.3		Scale	
Designed by	Hinnerichs	01.06.2012	Part number		Index	Date
Released by	Hinnerichs	01.06.2012	<b>BPE1203P-05A</b>		<b>A</b>	<b>01.06.2012</b>
Drawing number <b>410527262</b>					Page	2 of 3

5. Packaging

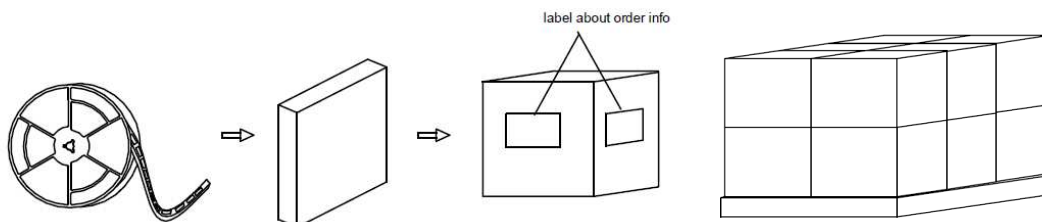
Dimensions of carrier tape



Dimensions of reel



1000pcs/reel  
 5reel/carton  
 5000 pcs/carton in total  
 carton size 38x28x37cm  
 12carton/tray  
 tray size 85x77x74cm



<b>GREWUS</b>			Dimensions without tolerance ± 0.3		Scale
Designed by	Hinnerichs	01.06.2012	Part number <b>BPE1203P-05A</b>	Index	Date
Released by	Hinnerichs	01.06.2012		<b>A</b>	<b>01.06.2012</b>
Drawing number <b>410527262</b>			Page	3 of 3	