

1. General

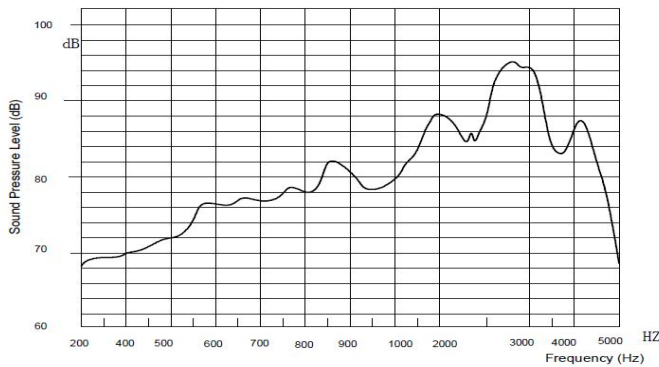
operating temperature:	-40°C to +85°C	component weight [g]:	1
storage temperature:	-40°C to +85°C	housing color:	black
contact:	SMD	IP rating:	n.a.
packaging:	tor	RoHs conform:	yes
ESD conform	<input checked="" type="checkbox"/>		
remark:	Housing material LCP		



2. Electrical and acoustical specification

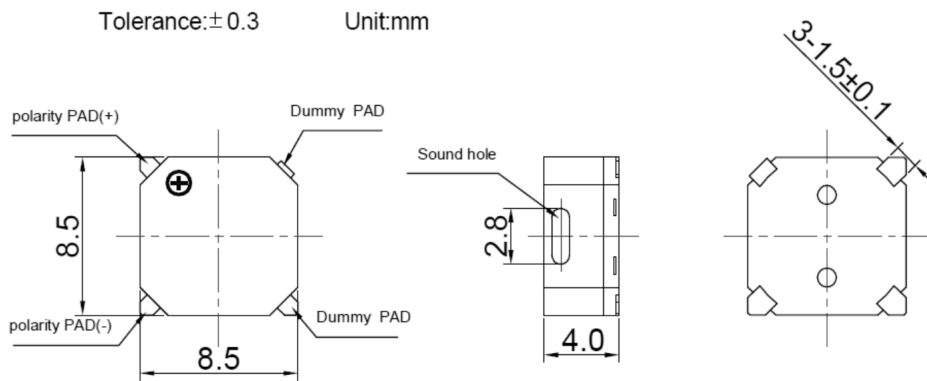
DC resistance [Ω]		15 ± 3
Resonance frequency [Hz]		2730
Rated voltage [V]	V_{op}	3.6
Operating voltage [V]	V_{op}	2 - 4
SPL [dBA]:	<i>in 10 cm distance, 2730 Hz, 3.6 V_{op}, 50% duty cycle, square wave</i>	
		≥ 87
Current consumption [mA]	<i>2730 Hz, 3.6 V_{op}, 50% duty cycle, square wave</i>	
		≤ 100
Remark:		

Frequency curve

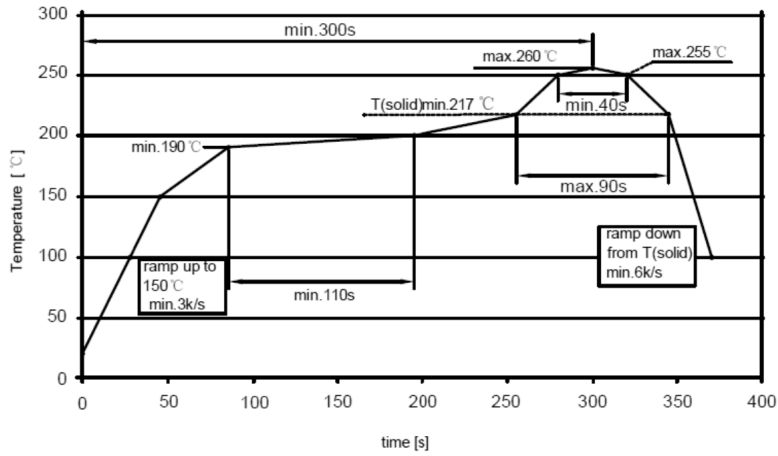


GREWUS		dimensions without tolerance:	± 0.2	scale:	
Designed by:	Ralf Hinnerichs	24.02.2009	part number: BME8504S-03A	index:	Date:
Released by:	Ralf Hinnerichs	24.02.2009		A	24.02.2009
drawing number: 398687086			Buzzer	Page 1 of 3	

3. Component drawing

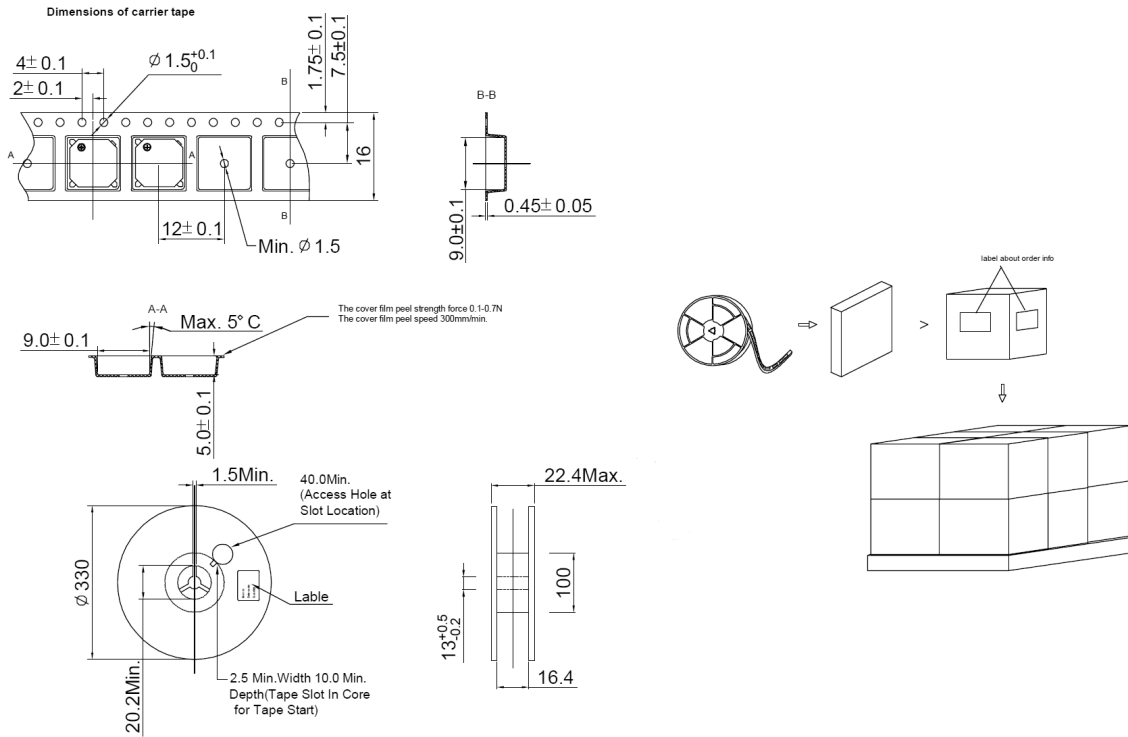


Temperature profile for a lead-free reflow process



GREWUS		dimensions without tolerance: ± 0.2	scale:	
Designed by: Ralf Hinnerichs	24.02.2009	part number: BME8504S-03A	index:	Date:
Released by: Ralf Hinnerichs	24.02.2009		A	24.02.2009
drawing number: 398687086		Buzzer		Page 2 of 3

4. Packaging drawing



Carton

Size: 38 x 28 x 37 cm

Smalest unit:

Quantity: 5000 pcs /b carton

quantity smalest unit: 1000 pcs / reel

Weight:

further packageing information: 5 reels / carton / 12 cartons / tray

GREWUS		dimensions without tolerance: ± 0.2	scale:	
Designed by: Ralf Hinnerichs	24.02.2009	part number:	index:	Date:
Released by: Ralf Hinnerichs	24.02.2009	BME8504S-03A	A	24.02.2009
drawing number: 398687086		Buzzer		Page 3 of 3